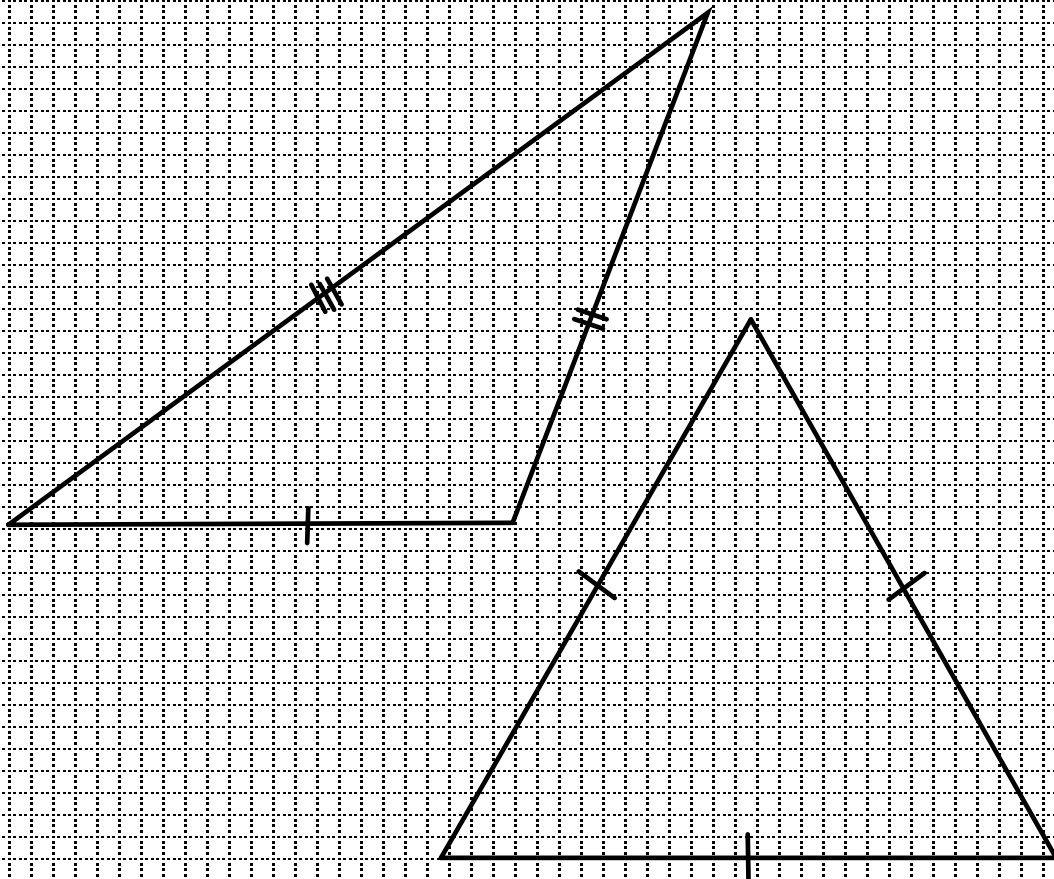
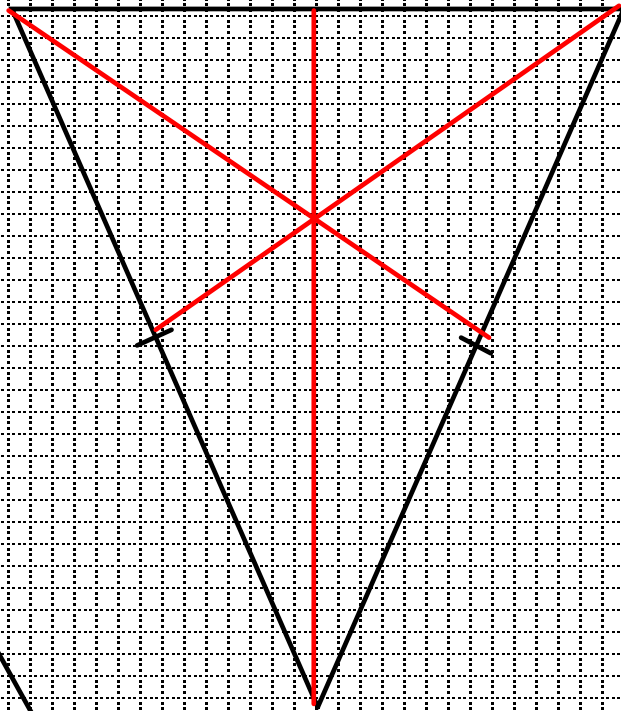
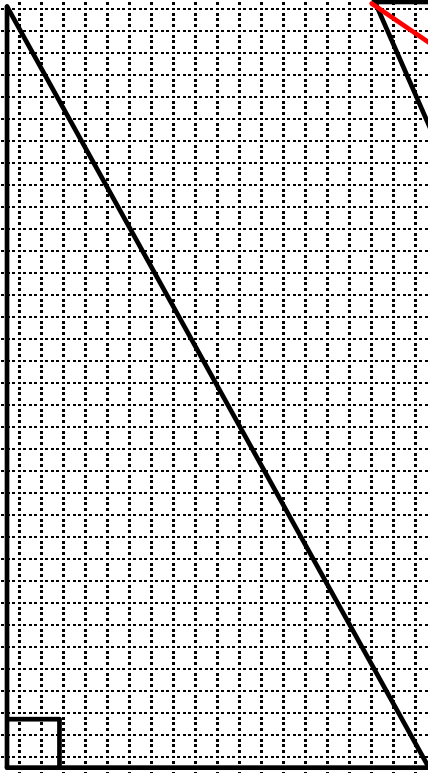


# Medians



Intersect at ONE POINT

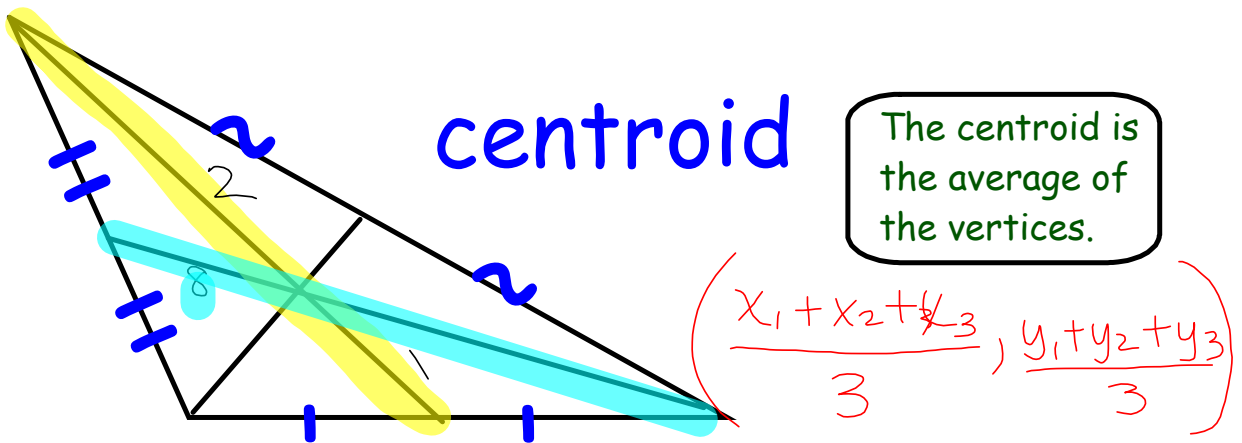
### MEDIANS

1. The medians of any triangle are concurrent.

The POI of the medians is the CENTROID.

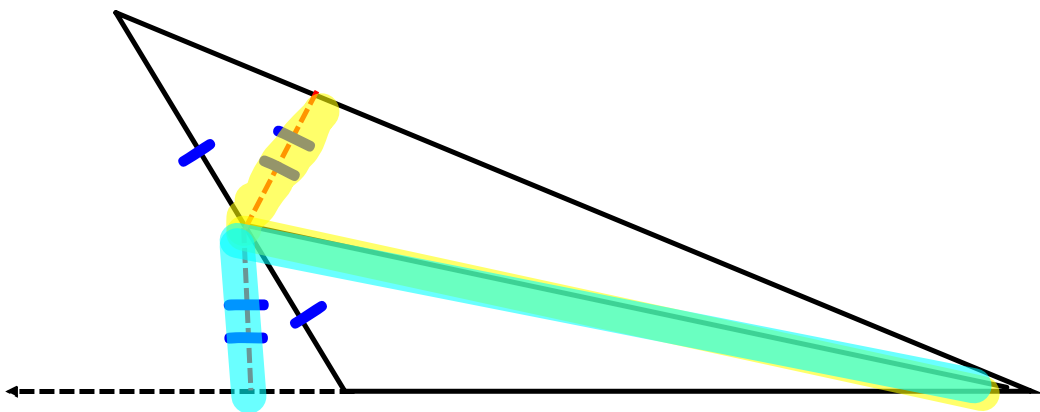
The medians bisect each other in a 2:1 ratio.

The centroid is the balance point of the triangle.

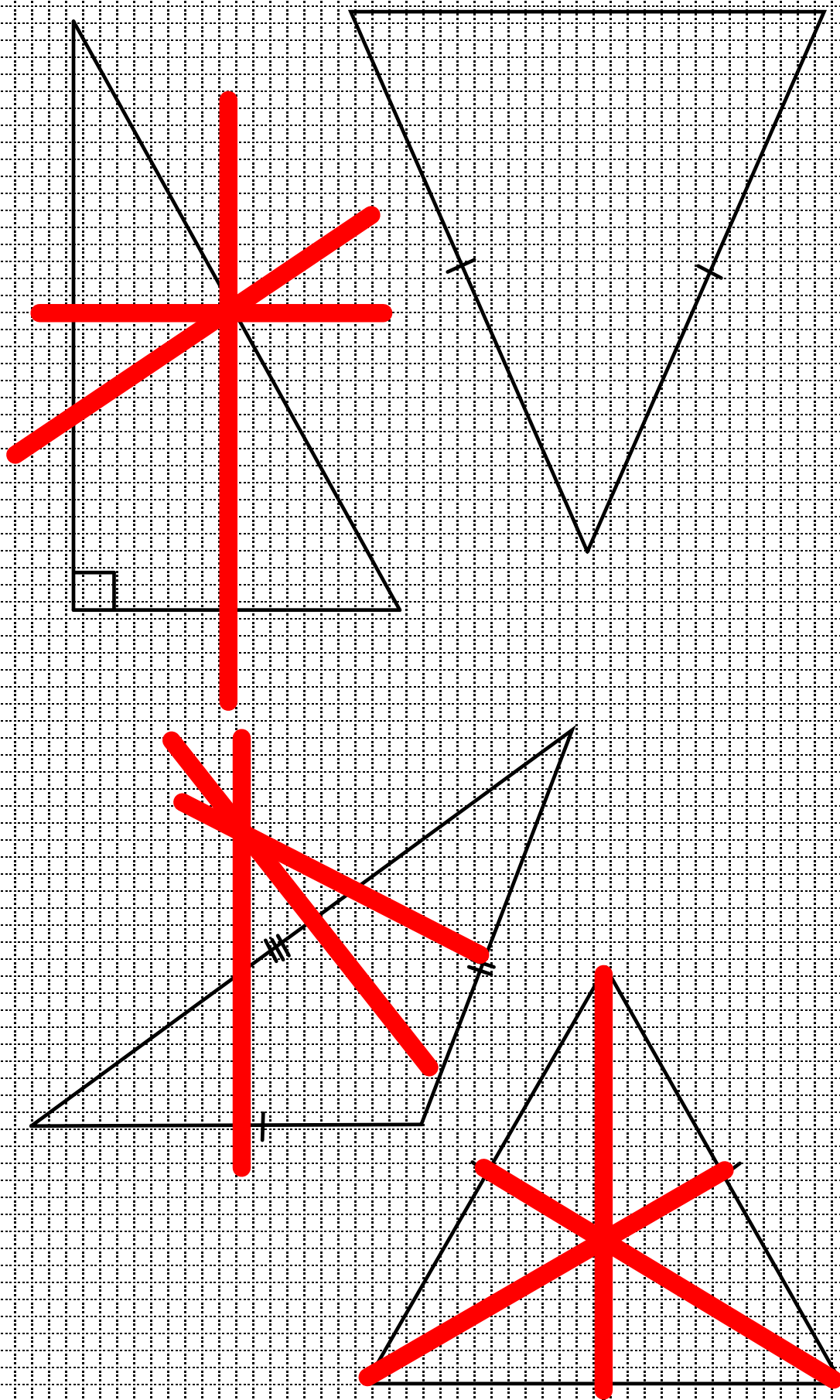


2. A median creates 2 triangles with equal area.

When the median is used as the base of each triangle, the height/altitudes are equal.



# Investigating Perpendicular Bisectors

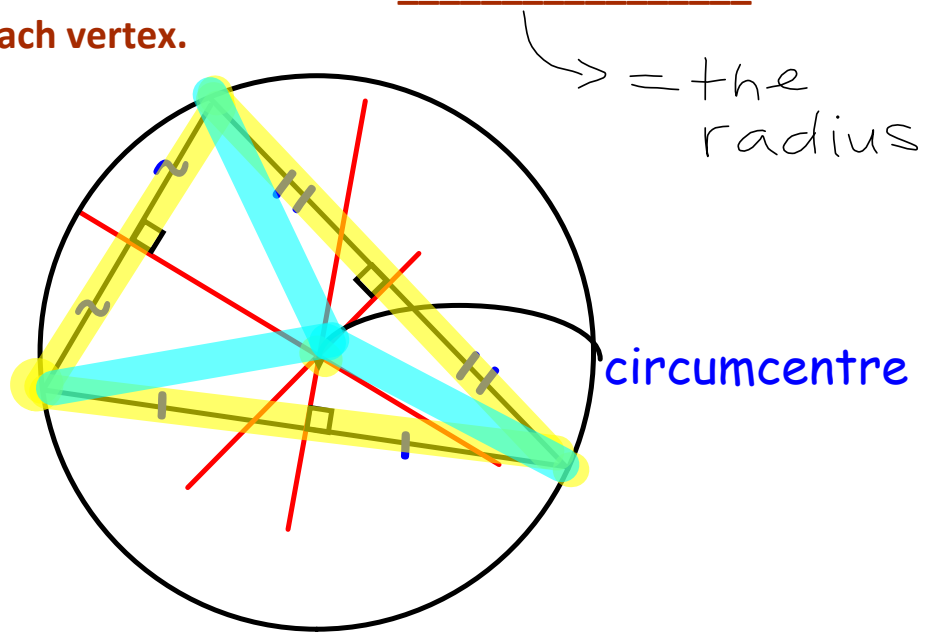


# PERPENDICULAR BISECTORS

5. The perpendicular bisectors intersect at the circumcenter.

The circumcentre is the center of the circle that contains all 3 vertices of the triangle.

The circumcentre is the same distance from each vertex.



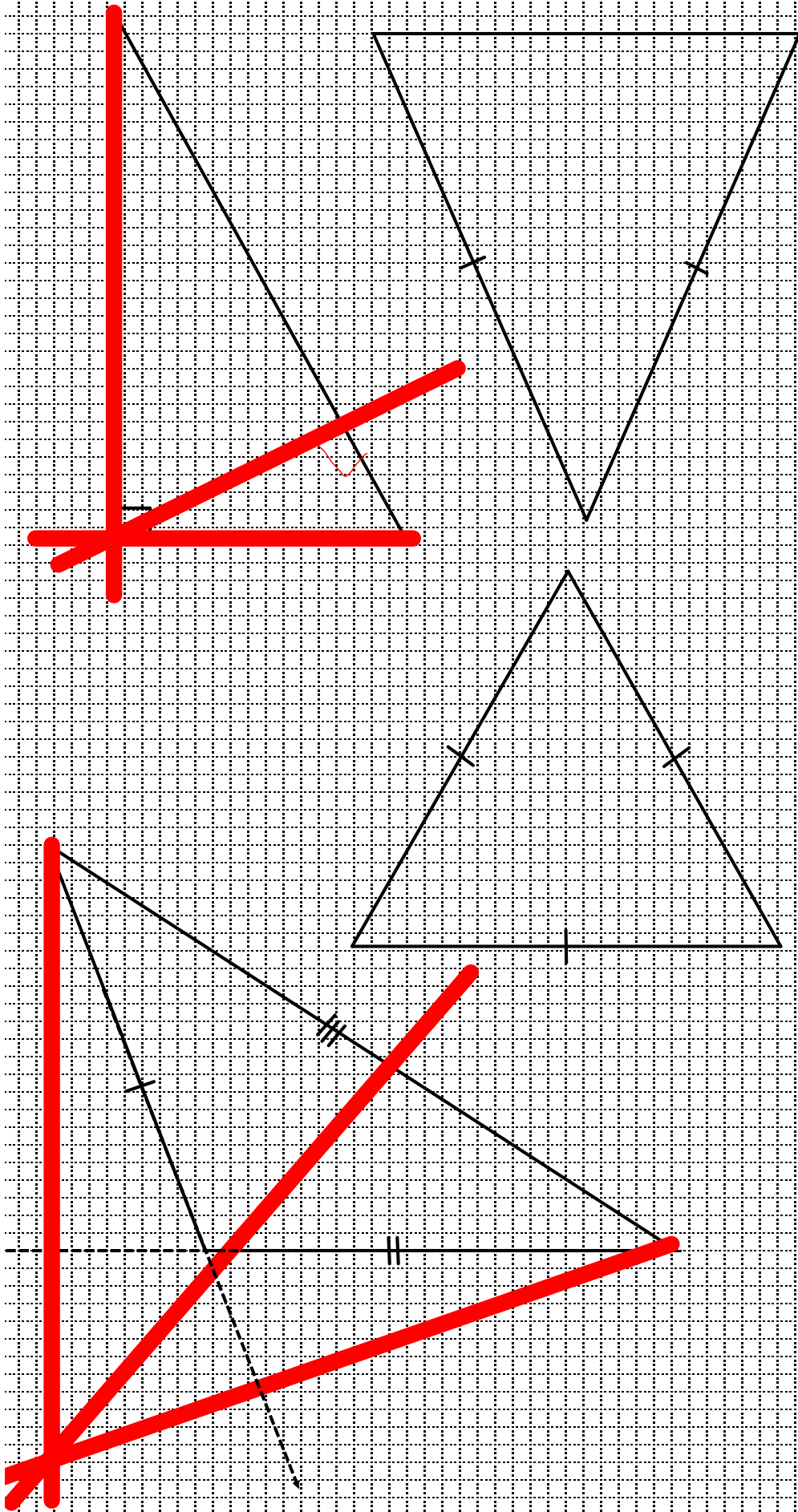
Grocery Store

~~Police~~  
Ice Cream



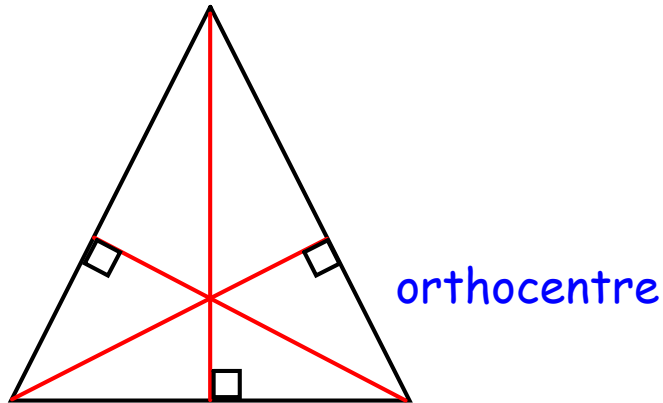
House

# Investigating Altitudes



## ALTITUDES

3. The altitudes of a triangle intersect at the orthocenter.

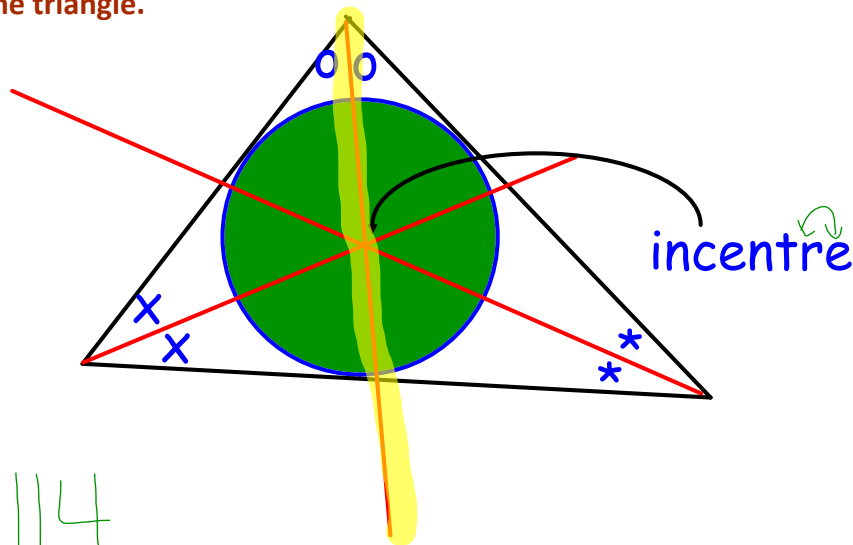


## ANGLE BISECTORS

→ line that cuts an angle in half

4. The angle bisectors of a triangle intersect at the incenter.

The incenter is the center of the largest circle that can be drawn inside the triangle.



p. 114

#5, 7ab, 14b, 15, 20, 22

→ Task Monday



## Attachments

---

2.7 Centroid.gsp

2.7 Median makes 2 smaller triangles.gsp

2.7 Orthocentre.gsp

2.7 Circumcentre.gsp

2.7 Incentre.gsp