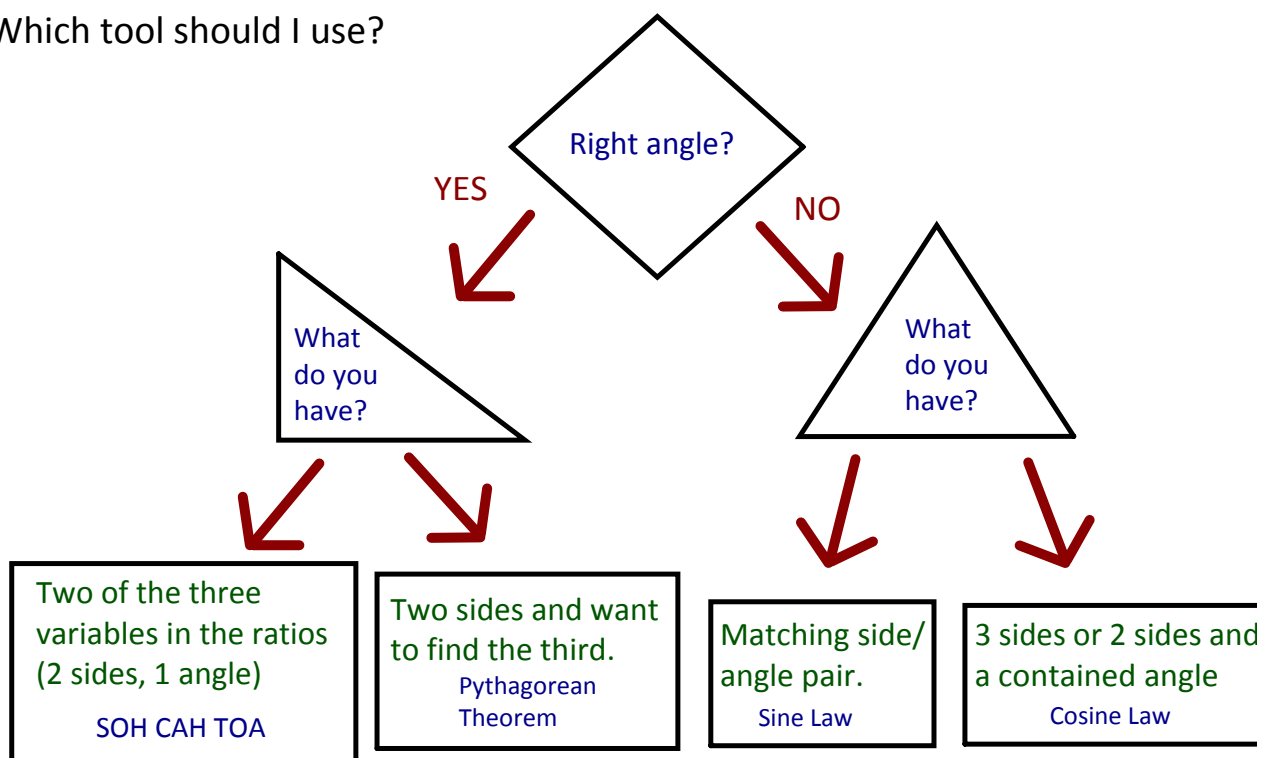
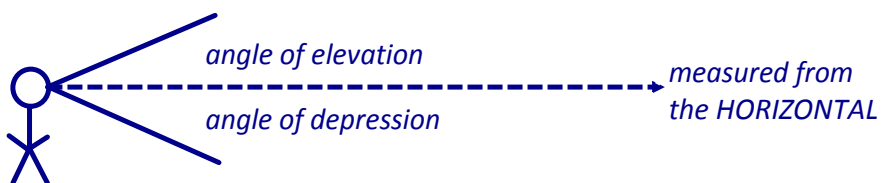
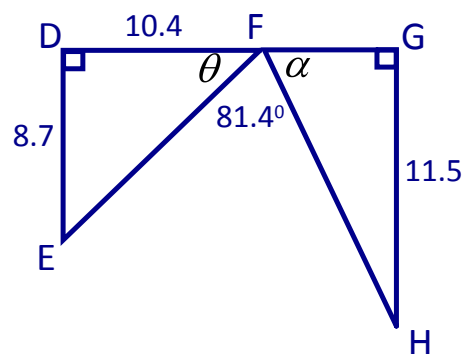


Lesson 4.4 A Problems in Two Dimensions Part I

Which tool should I use?

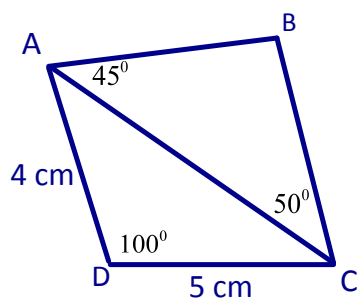


Ex. 1 Find the length of FH.

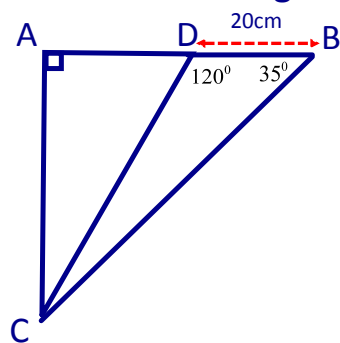


Ex. 2 From the top of a 120 m tall building, the angle of elevation to the top of another building is 47° and the angle of depression to the bottom of the same building is 36° . How high is the second building?

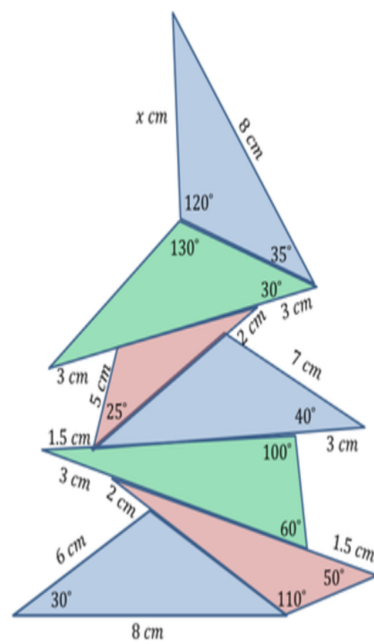
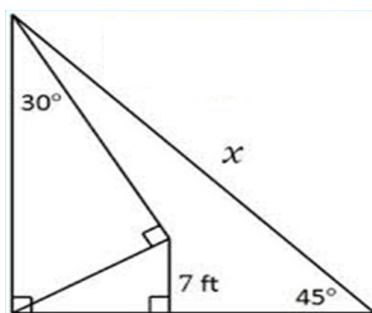
Ex. 3 Find the length of BC to one decimal place.



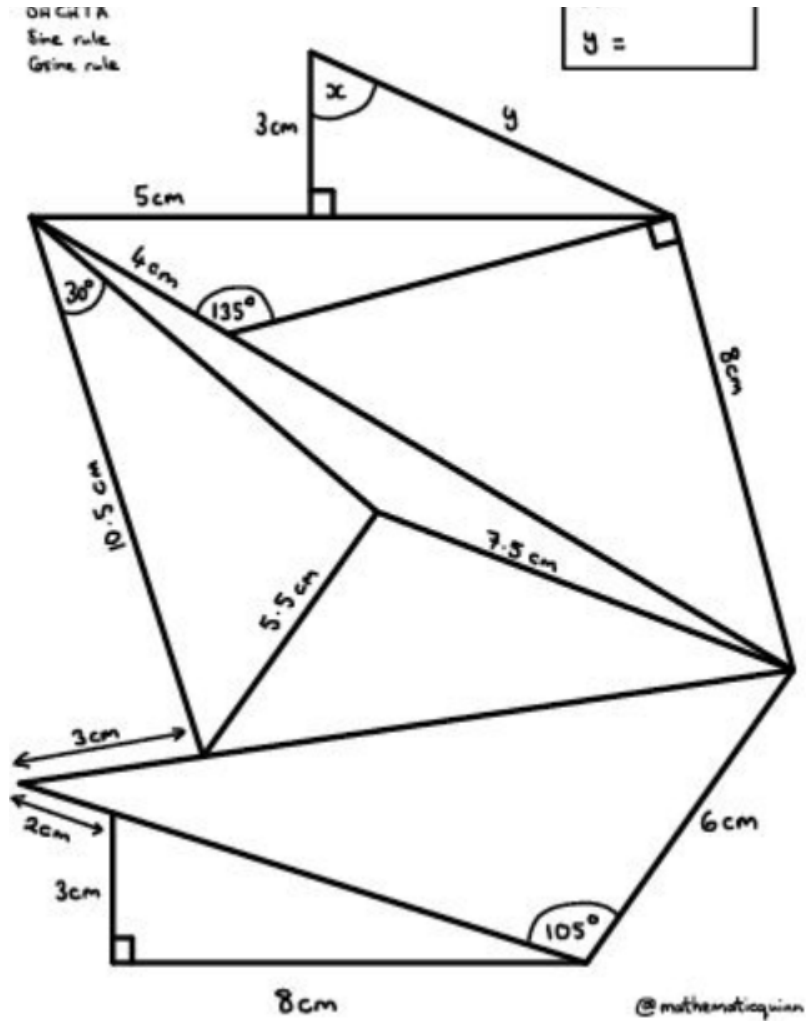
Ex. 4 Find the length of AC to the nearest tenth.



Additional challenges for homework:



OR CHITA
Sine rule
Cosine rule



@mathematician