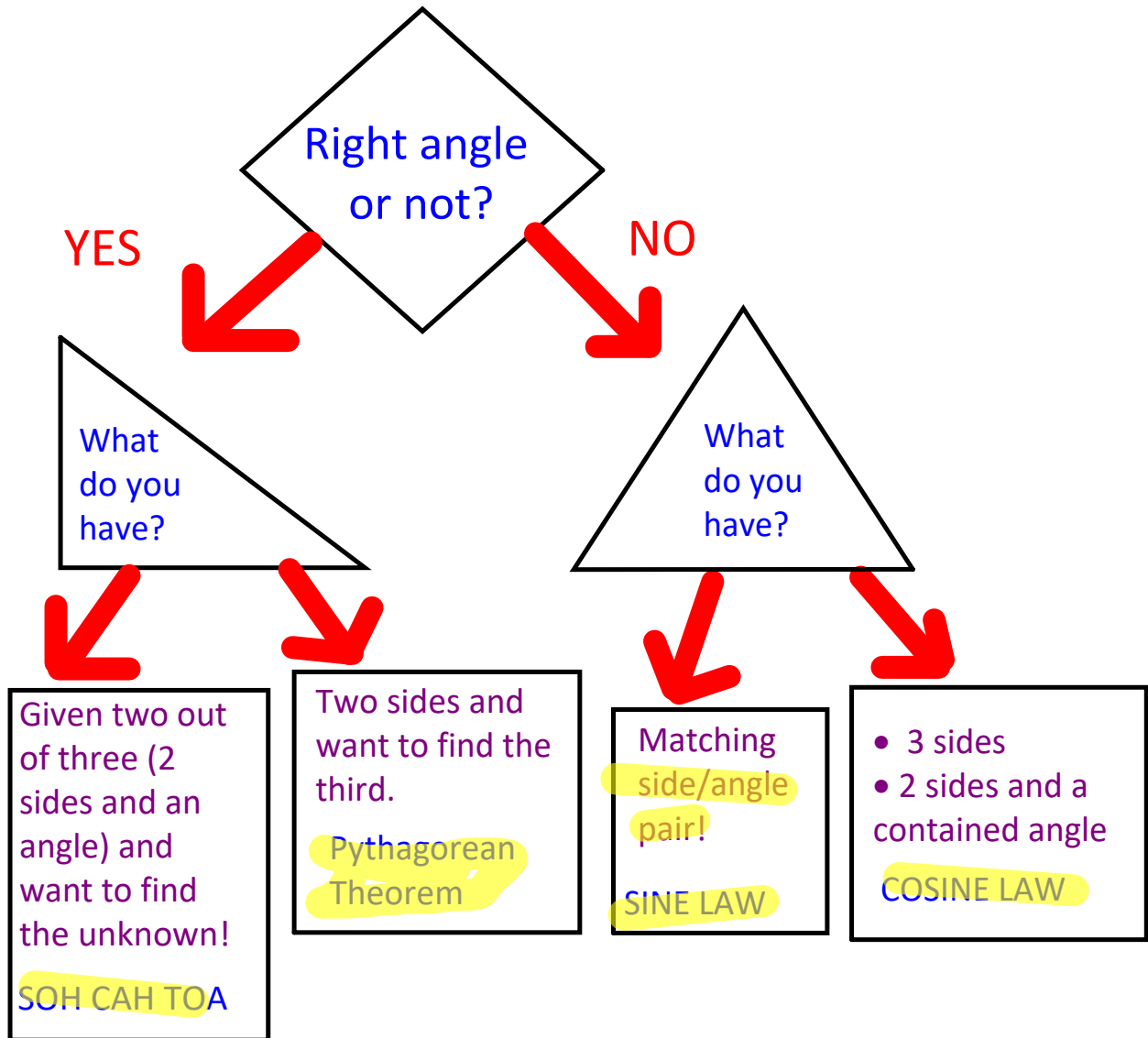
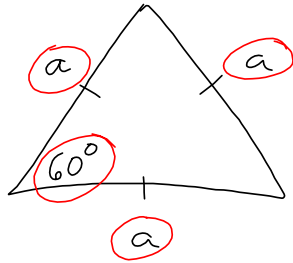


# When do I use WHAT?



16



$$\boxed{\cos 60} = \frac{1}{2}$$

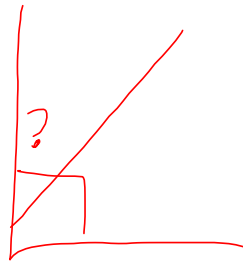
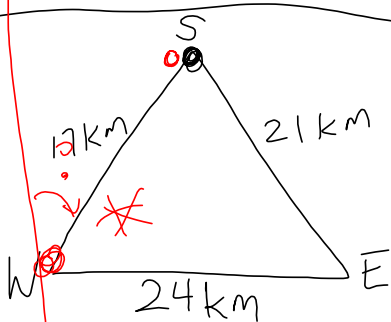
$$\cos \theta = \frac{a^2 + b^2 - c^2}{2ab}$$

$$\cos 60 = \frac{a^2 + a^2 - a^2}{2a(a)}$$

$$\cos 60 = \frac{1a^2}{2a^2}$$

$$\boxed{\cos 60 = \frac{1}{2}} \quad \text{TRUE}$$

9



∴